



ZIVA SLIM



EXPERIENCE AND INNOVATION
SINCE 1948

Dear Customer,

FARO wishes you success with your new high quality ambient lamp.

To work safely and to take full advantage of the product's performance, please read this manual carefully before using the device.

In particular, please follow all warnings and notes described in the Safety Recommendations.

FARO shall not permit any changes to the product that are not expressly authorised in writing, generating loss of conformity with safety regulations and warranty.

Warranty Conditions:

FARO offers the end customer a warranty of 12 months from the date of installation up to a maximum of 18 months from the date of manufacture.

Warranty repairs must be carried out by FARO or its approved service network.

The warranty is considered valid only when:

- the user registered the guarantee through the Faro website;

<https://faro.it/en/warranty-registration/>

The warranty covers manufacturing and engineering defects; in the event of a valid claim, the warranty only covers the free replacement of parts. Manual work is not included in the guarantee.

The warranty shall not be considered valid, at FARO's sole discretion, if the defect is due to tampering, damage, unauthorised modifications to the product, improper use, incorrect maintenance and normal wear and tear.

DOCUMENT INDEX

1	SYMBOLS USED	3
1.1	SYMBOLS USED WITHIN THE MANUAL	3
1.2	SYMBOLS ON LABELLING AND PACKAGING	3
2	PRODUCT DESCRIPTION	3
2.1	INTENDED USE	3
2.2	STORAGE AND USE: ENVIRONMENTAL PRESCRIPTIONS	3
2.3	DESCRIPTION OF PARTS	3
3	INSTALLATION	4
3.1	POSITIONING HEIGHT	4
3.2	MECHANICAL INSTALLATION	4
3.3	ELECTRICAL INSTALLATION	4
4	INSTRUCTIONS FOR USE	5
4.1	IGNITION AND ADJUSTMENT	5
4.2	CLEANING	5
5	PREVENTIVE MAINTENANCE AND ROUTINE CHECKS	5
6	TECHNICAL SPECIFICATIONS	5
7	WARNINGS	6

1 SYMBOLS USED

1.1 SYMBOLS USED WITHIN THE MANUAL

	WARNING
Paragraphs marked with this symbol contain instructions that must be followed carefully to avoid damage to the device, operator and patient.	

	ATTENTION
Great care must be taken to avoid situations that could damage the device.	

	PROHIBITION
This icon highlights what not to do to avoid damage to the device.	

	NOTES
With this icon, information is provided that allows the device to be used more effectively.	

1.2 SYMBOLS ON LABELLING AND PACKAGING IO

The nameplate is attached to the top and bears the following data:
 Serial Number (SN): year (AA) / family (AL)
 plus sequence number (NNNN)

ex: SN17AL000001.

The following harmonised symbols are also present:

Symbol	Description	Symbol	Description	Symbol	Description
	European Conformity Mark		Use the device at a pressure between 80 kPa and 106 kPa		Storage and transport atmospheric pressure
	Manufacturer symbol		Use the device at a temperature between 10°C and 32°C		Storage and transport temperatures
	Serial number		Use the device at a relative humidity between 30 RH and 75RH		Relative humidity during storage and transport
	Instructions for use include safety warnings		Part Number from Catalogue		Do not use hooks
	WEEE equipment according to Directive 2012/19/EC.		Symbol for switching and adjusting light intensity Stand By		Maximum stackable weight
	Recyclable cardboard		Protect packaging from rain and high humidity		Do not roll
			Fragile		High

2 DESCRIPTION OF PRODUCT

2.1 INTENDED USE

The lamp is intended for illuminating working environments, including medical practices and dental laboratories.
 The device must be installed on the ceiling by qualified personnel.
 The light source consists of LEDs whose light is diffused through specific diffusers.
 The diffusers provide a regular and uniform light spot at every illuminance

level and distribute the light evenly in the room and work area. The light distribution is designed to reduce both shadow areas and stress and visual fatigue for the operator.
 The light intensity must be adjusted with the touch button on the device.
 For electrical and mechanical connections, follow the instructions given in the Installation section.

2.2 STORAGE AND USE: ENVIRONMENTAL PRESCRIPTIONS

The device in its original packaging can be transported or stored for a period of 15 weeks if the following environmental conditions are met:

- Ambient temperature -20°C to +70°C
- Relative humidity from 10% RH to 90% RH
- Atmospheric pressure from 50 kPa to 106 kPa

The device must be used under the following environmental conditions:

- Temperature from 10° to 32°C
- Maximum altitude: 2000 m
- Relative humidity 30% RH to 75% RH

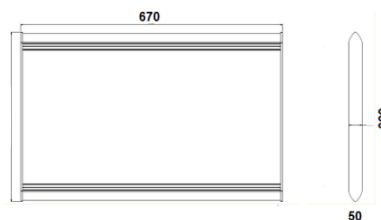
2.3 DESCRIPTION OF PARTS



- 1 - Suspension system
- 2 - Power and adjustment button
- 3 - Diffuser panel

Following items are Included with the packaging:

- 1 Ziva Slim lamp
- 4 Ø 6 mm dowels with screw



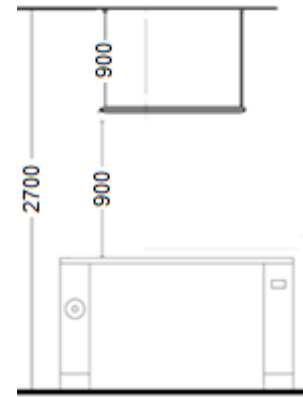
- 4 Threaded washers plus bushing
- 4 steel cables for attaching the lamp to the ceiling
- 1 template showing the position of the holes for installation
- 1 ceiling-mounted cable gland rosette and fixing accessories
- 1 leaflet for downloading instructions for use.

The general dimensions are defined in the image above.

3 INSTALLATION

3.1 POSITIONING HEIGHT

The ceiling light is designed to be positioned at 900 mm from the work surface.
 In this situation the lamp provides 3400 lux.
 Smaller distances generate higher illuminances.
 Longer distances generate lower illuminance values.
 Typically, the following values can be obtained:
 700 mm: 4,700 Lux
 800 mm: 3,700 Lux
 900 mm : 3,400 Lux
 1000 mm: 2,900 Lux



Please refer to the adjacent image for a typical installation diagram.
 Cut the suspension cables so as to have the desired height and the correct distance from the target.

3.2 MECHANICAL INSTALLATION

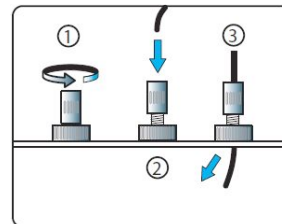
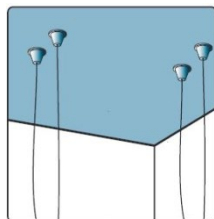
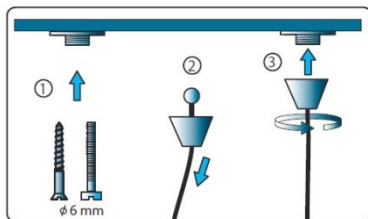
	<p>WARNING: Installation notes</p> <p>The ceiling must be able to support 40 kg for each fixing point provided for the installation. Ensure the tightness of the plugs in the ceiling after installation by applying an axial load of at least 15 kg. Failure to comply may result in the product becoming detached with risk of falling on persons.</p>
	<p>Position the lamp so that the side with the switch is easily accessible to the operator.</p>

Position the drilling jig on the ceiling

- Drill the ceiling in the predetermined position with a suitable drill bit and insert the dowels (1)
- Position the threaded washers at the drilled holes in the ceiling (1)
- Secure the washers with the Ø 6 screws (1)
- Thread the steel cable into the bushes (2) and screw them onto the threaded washers (3)

On the lamp:

- Partially unscrew the knob (1)
- Press the knob (2)
- Insert steel cable (2), (3)
- Hang the lamp via the steel cable system
- Fix the height of the lamp at 900 mm from the worktop.
- For height adjustment, turn the 4 knobs on the upper room lamp
- Check that the device is levelled.



3.3 ELECTRICAL INSTALLATION

	<p>Electrical Hazard Warning</p> <p>The device must be installed by specialised technicians. At installation, the power supply must always be switched off. Use a terminal block conforming to EN 60998-2-1 or EN60998-2-2 for connection. ES: Cembre Z205-1 Zetamini series Check the nameplate data before installation.</p>
	<p>Note for installation</p> <p>The operation or safety of the lamp does not depend on the polarity of the supply current. Therefore, there is no risk of malfunctioning if the power cables are reversed.</p>
	<p>Note for installation</p> <p>Support/remove the lamp using the outer profile. Do not force on the diffuser panel (white).</p>
	<p>Note for installation</p> <p>Support/remove the lamp using the outer profile. Do not force on the diffuser panel (white).</p>

4 INSTRUCTIONS FOR USE

4.1 LIGHTING AND REGULATION

The lamp can be switched on and off via an omnipolar switch in the room's electrical system.

The lamp is equipped with a contact sensor for :

- lighting on
- lighting off
- adjustment of light intensity

To switch the lamp on and off, touch the button and remove your finger.

To adjust the light intensity hold the finger on the button.

The light intensity varies continuously between maximum and minimum. When the desired intensity is reached, remove the finger from the sensor.



Whenever the lamp is switched on, the light intensity will be the one stored at switch-off (even if by omnipolar switch)

4.2 CLEANING

Cleaning should be done with a soft cotton cloth moistened with a non-foaming cleaning solution.

Always wring out the cloth to remove all excess liquid.

Warning against corrosion and the risk of falling masses		
	For all metal or plastic parts, it is strictly forbidden to use substances that are <ul style="list-style-type: none"> - abrasive, - corrosive, - acids, - substances containing chlorine or chloride ions, phosphorus or phosphorous ions, - Trilene-based detergents, petrol, white spirit, chlorine or similar. 	Do not use detergent-disinfectants containing the following substances to clean plastic parts: <ul style="list-style-type: none"> - Ammonium hydroxide - Sodium hydroxide - Hydrogen peroxide - Ammonium chloride - Methylene chloride - Methyl alcohol - Acids and corrosive substances of all kinds.
	It is forbidden to spray any chemical substance directly onto the device.	The use of disinfectant wet wipes without rinsing is prohibited.



Notes for cleaning

Do not force the panel during cleaning.

5 PREVENTIVE MAINTENANCE AND ROUTINE CHECKS



Only a trained technician is authorised to perform corrective maintenance and replacement of any part of the device, according to the manufacturer's service manual.

Effect	Cause	Action	Resp
The lamp does not light.	Mains power supply is missing. Inadequate mains power supply	Check the connection to the omnipolar switch.	User
		Check that the mains supply is enabled.	User
		Check that the mains supply is correct as stated on the nameplate of the appliance	User
		The lamp was switched off by the on/off control.	User
Insufficient or too much illuminance	Incorrect adjustment	The lamp was set to minimum by the on/off control. Act as per §4	User
	Component failure	Contact technical support	User

For all other issues, please contact Faro Spa's authorised technical service.

6 TECHNICAL SPECIFICATIONS

Supply voltage: 220-240 V ac 50-60Hz

Power input: 80 W

Protection against electrical hazards: Class I

IP: 40

Dimensions: 670 x 330 x 50

Net weight : 3,8 kg

Typical illuminance at 900 mm 3,400 Lux

CRI: > 90

Colour Fidelity Index TM 30-18 Rf : 89 / Rg : 99.5

Tk: 5500 K

Classification 62471: Actinic UV: exempt

Near UV: exempt

Retinal Blue: exempt






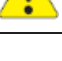

Ir: exempt

Reference standards: SAF EN60598-2-1:2015 EMC EN 55015:2013; EN 61547:2009; EN 61000-3-2:2014; EN 61000-3-3:2013

Directives/Regulations Directives 2014/30/EU - 2014/35/EU - 2011/65/EU

7 WARNINGS

The packaging of the lamp is suitable to adequately protect it from the penetration of external agents.

	<p>Warning against electrical or fire hazards</p> <p>Do not use the lamp if its components are damaged. The device must only be installed by qualified personnel. The device must be installed with a mains disconnection device of omnipolar type and compliant with IEC 61058-1 standard, fitted with an earth cable.</p> <p>Check that the supply voltage, indicated on the rating plate, matches the mains voltage.</p> <p>Do not carry out any maintenance work on the lamp when the power supply is switched on: therefore disconnect the power cable from the mains before working on it.</p>
	<p>Warning of risk of electric shock (source: IEC 60417-6042 (2011-11))</p> <p>The light source in this luminaire may only be replaced by the manufacturer or his service department or similarly qualified personnel</p>
	<p>Warning of danger from falling masses</p> <p>Strict adherence to the maximum permissible loads must be observed.</p> <p>The ceiling must be able to support 40 kg for each fixing point provided for the installation.</p> <p>Photobiological Risk Warning</p> <p>The lamp is classified as photobiological risk E X E M P T according to EN 62471.</p> <p>However, it cannot be ruled out that particularly photosensitive patients or those who have taken photosensitising drugs may experience erythema or allergic reactions to light.</p> <p>In this case, suspend the exposure and use very low illuminance levels.</p>
	<p>Explosion Hazard Warning</p> <p>The device is not suitable for installation in environments containing flammable gas, atmospheres classified as explosive and oxygen-rich environments.</p>
	<p>Warning of the danger of incorrect maintenance</p> <p>Do not carry out maintenance or replacement of parts other than those indicated in the manual. Any work not indicated in the manual could compromise the safety aspect of the device.</p> <p>Only carry out maintenance operations described in the manual; in any other case, please contact technical support.</p>
	<p>Warning of danger of damage</p> <p>To avoid the risk of damaging the product, do not push and/or force the light diffuser panel.</p>
	<p>Attention for disposal</p> <p>The Product is covered by the WEEE Directive 2012/19/EU</p> <p>When scrapping and disposing of materials, follow the regulations in force in your country, using recognised and authorised specialised companies if necessary.</p> <p>At the end of the life cycle, divide the materials according to their type (ferrous, rubber, plastic).</p> <p>Do not leave small parts of the equipment unattended or within reach of exposed persons (children) as they are potential sources of danger.</p>



DAL 1948: ESPERIENZA
E RINNOVAMENTO

FARO S.p.A.

via Faro, 15 - 20876 Ornago (MB) - Italy Tel. +39 039.68781
www.faro.it - comm.italia@faro.it - export@faro.it

FARO FRANCE

Za Tgv Coriolis - 71210 Monchanin - France Tel. +33 385.779680 - Fax +33 385.779688
www.farofrance.com - farofrance@farofrance.com

FARO SpA reserves the right to change, without notice, the specifications indicated in this manual. FARO SpA reserves the right to change the specifications of this equipment without notice.
FARO SpA se réserve le droit de modifier, sans préavis, les caractéristiques dans ce manuel.
FARO SpA behält sich recht vor, jederzeit stillschweigend technische oder bauliche Änderung vorzunehmen.
FARO SpA se reserva el derecho de modificar sin aviso previo la características incluidas en el presente manual de uso.